

Day 1

First mammals, birds and a bit of time...

- * 1 night at a recreational lodge located near Windhoek.

inclusive:

- * Dinner, bed and breakfast

Acacia savanna of the central plateau called Khomas Highland

Welcome to Namibia! We welcome you to a small lodge in the acacia savannah of the central high plateau.

After a long flight, the longing to "arrive and enjoy" and "soak up the sun" is always first priority.

A scenic drive through the central highlands, locally called the "Khomas Highland", opens up the wide geological variety found in Namibia. Most of southern Namibia is covered by enormous sandstone layers, ripped through by basaltic ridges and decorated by bulbous granite outcrops.

You can take wonderful short hikes or walks, or just enjoy the scenery by the pool. There is also the possibility to join a game drive in the afternoon, to enjoy your first African mammal and bird sightings.

natural: We have chosen a comfortable lodge with a quiet location in the middle of the acacia savannah for you. Game drives and nature walks are well possible or you can relax at the pool with a magnificent view into the acacia savannah.

classic: You will get south of Windhoek amidst a beautiful range of mountains at this beautiful lodge, with spa area and fantastic views, very comfortable to relax or even take your first game drive or hike in wildlife rich Africa.

luxury: On the small, but very fine, guest farm Voigtland, where the giraffes eat out of your hand while enjoying coffee & cake, you will be personally welcomed and cared for. Charmingly, the afternoon Coffee-time is now called "High Tea with Giraffes".



Days 2 & 3

ideal as from February...

- * 2 nights at a selected lodge in the middle of the linear dune landscape of the Kalahari.

inclusive:

- * Dinner, bed & breakfast
- * 2 x game drives into the linear dunes, where you can see some animals as well as beautiful landscapes and diverse bird life.

Linear Dunes of the Kalahari

The Kalahari is an endless sea of red sand, carved up by ephemeral rivers with high camelthorn trees - beautiful! Kgalagadi means waterless, maybe that's why only the Bushmen dared to settle there. We drive through the acacia savanna of the central plateau until we reach the various linear dune landscapes, rough limestone reefs and wide salt pans of the Kalahari. The Kalahari is a paradise for photographers with its linear dune landscapes and camel thorn forests, especially sunrises and sunrises fascinate every nature lover. Gigantic Sociable Weaver nests literally cover ancient camel thorn acacias along the way - with a bit of luck you might even see a Cape Cobra, as they love to raid the nests of this communal bird.

natural: On a rustic designed but individual lodge you are accommodated comfortably and in a separate bungalow. We chose this lodge because it was small and not disturbing in the nature there. Instead of cutting down the trees, they have built around them - which is pleasing.

classic: The lodge scores with various good accommodation options and very good activities, where a range of different animals can be seen. We have chosen the dune bungalow with a fantastic view over the Kalahari.

luxury: Very high quality and tastefully furnished, this lodge is always highly recommended. Very impressive game drives on a vast nature reserve.



Additional Days for hikers

Boot your boots on. take your hat and go

- * 2 nights at the "bull's head" of the Naukluff on a very well run guest farm.

inclusive:

- * Dinner, bed and breakfast

Remark:

In this magnificent locale, the hiking trails into the mountains stretch over considerable distances. However, we've meticulously curated a diverse range of activities to cater to every guest's preferences. If hiking isn't your cup of tea, rest assured that we can arrange thrilling mountain excursions with expert drivers at your disposal.

Hiking the Naukluff

Today, our itinerary leads us to the Naukluff Mountains, a stunning realm composed of intricately folded and contorted dolomite, granite, and a myriad of captivating Tufa formations. Our journey unfolds on foot as we set out to explore this enthralling terrain.

Though the Naukluff Mountains may initially appear as a harsh, arid, and inhospitable expanse, but this region is a sanctuary teeming with avian life and an array of fascinating plant species.

Leaflove Safari regards the Naukluff Mountains as a hidden natural gem. Amidst this enchanting botany, you'll encounter Quiver trees, the distinctive elephant's feet, the hardy resurrection bush, also known as bushman's tea, and the intriguing bushman's candles. As you traverse the rugged slopes, you may catch sight of the regal Hartmann mountain zebras, the majestic greater kudu, and the agile Klipspringer, gracefully perched upon the steep rocky terrain. Meanwhile, a captivating variety of fig species will beckon the delightful Rosy-faced lovebirds to their succulent offerings.

For a refreshing pause, you can dip your weary feet into the crystal-clear spring waters.

Additional Days on our Farm?

A farm just for you, no other tourists around...

- * 2 nights retreat at Leaflove Safari's exclusive game and nature reserve, nestled in charming guest rooms. Please note, this stay is exclusively reserved for Leaflove Safari clients.

Step into the historic family farm, now in its 5th generation, belonging to the Voigts von Schütz family. Embodying ecological principles, nature-friendly farming, and a deep affection for the rugged semi-desert landscape, this farm truly embodies the essence of Namibia.

inclusive:

- * Overnight stay and supported self-catering (filled fridge)



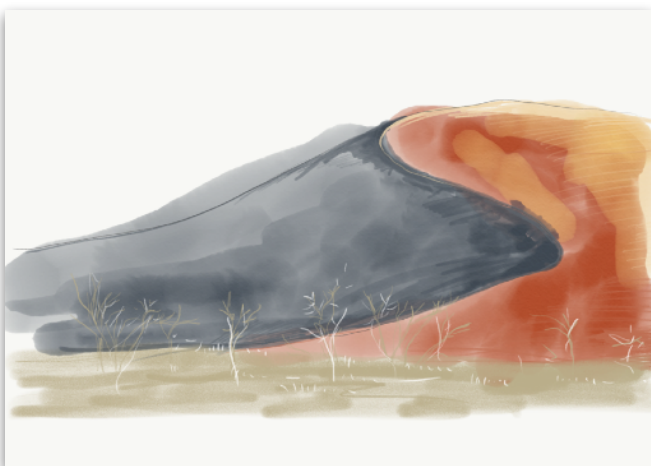
Additional Days „high end“

... fantastic ocean of sand

- * 2 nights amid the stunning dune wilderness of Namib Rand Nature Reserve at our exceptionally exclusive lodge.

inclusive:

- * Full board
- * Explore the mesmerizing dune valleys of Namib Rand Nature Reserve with our ecologically sound game drives. Hop aboard open jeeps guided by our skilled team, and embark on a breathtaking journey through this remarkable landscape



Farm Nomtsas, the Leaflove Safari Nature Protectorate

Heino Voigts' passion for nature and idealism inspired him to return the space that his forefathers had taken from it. Although he is no longer with us, his legacy thrives under our care in this pristine African corner, exclusively yours to savour – no other tourists in sight!

Look out for giraffes, diverse antelope, warthogs, and an array of semi-desert birdlife. Red sediment winds through vast, barren landscapes, linked by linear oases and ephemeral rivers, providing unexpected sustenance and shelter for wildlife. Ornithologists spot Sclater's larks, botanists discover Hoodias, geologists collect limonite cubes, and photographers capture the sun setting behind giraffes. There's time for everything.

We, Leaflove Safari, cherish this approximately 22,000 ha wilderness area, featuring several shallow reservoirs. If the rains have been generous, spend your day here, observing the abundant water and savannah birds.

Namib Rand Nature Reserve

Vast red dune valleys carpeted in golden grass stretch as far as the eye can see...

Spanning 202,200 hectares, the Namib Rand Nature Reserve ranks among Africa's largest private reserves and stands as a pinnacle of natural beauty!

Under Stephan Brückner's stewardship, this haven caters to landscape enthusiasts and nature aficionados, offering top-notch accommodations, impeccable service, eco-friendly practices, and exquisite cuisine.

The red-orange dunes of the Namib interlace with colossal inselbergs, while thousands of "fairycircles" adorn the endless dune valleys, leaving our guests breathless.

This sanctuary is home to numerous oryx antelope, springbok, mountain zebra, giraffes, and even hyenas, alongside countless small creatures. In all sincerity, we declare: "Until you've witnessed the Namib Rand Nature Reserve, you haven't truly experienced a quintessential, and perhaps the most beautiful, facet of the Namib dune world!"

Days 4 & 5

... the highest star dune

- * 1 night at a premium lodge nestled within Namib-Naukluft Park, granting you exclusive access to the majestic dunes before or during the magical sunrise (*classic & luxury only*).
- * 1 night in the fantastic landscapes of Gaub Canyon near the Rotstock mountain range.

inclusive:

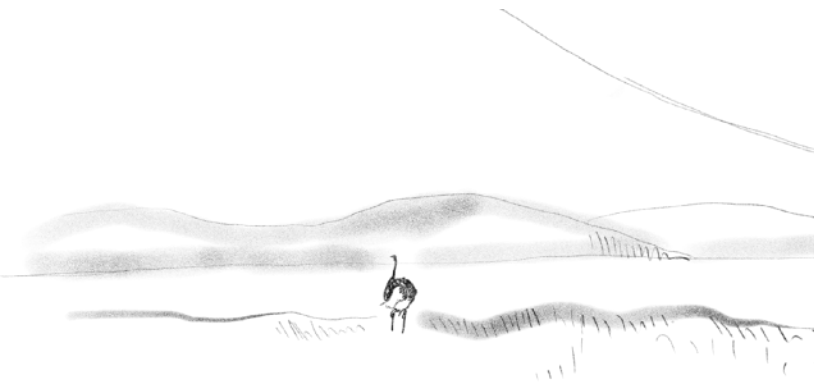
- * Dinner, bed and breakfast

Dune landscapes at Sossusvlei, the Sesriem Canyon, and stunning desert vistas

After an early start, our journey takes us to Sossusvlei, a destination that's on every traveler's must-see list, known for being the birthplace of the world's tallest dunes. As the sun rises, it bathes the remarkable red dunes in a magical light, revealing their breathtaking beauty.

Sossusvlei, nestled at the end of the Tsauchab River, is a unique floral paradise in the heart of the arid Namib Desert, surrounded by dunes that can soar up to 300 meters high. As we explore the winding valleys, we gain insight into the remarkable adaptations that allow various organisms to thrive in this harsh desert environment. And when we finally reach the summit of these dunes, the panoramic view is truly spectacular, making the challenging hike well worth the effort.

Not too far from Sossusvlei lies the striking Sesriem Canyon, a deep and narrow gorge sculpted over countless years by the forces of deposition and erosion. In bygone days, ox-cart drivers had to connect six oars to draw water from this canyon, giving it the name "Sesriem." The geological history and stunning scenery of this area are truly eye-opening, leaving most visitors eager to return.



natural: Near the entrance to Namib-Naukluft Park, you'll find a sizeable lodge renowned for its superb buffet and convenient access to Sossusvlei. Here, guests can book a variety of activities and be right in the heart of all the "dune action." However, there's a drawback – the park only opens at sunrise, resulting in a delay of up to an hour to reach the vlei. This means you'll be traveling in the midst of the tourist rush and might not arrive at the vlei until at least an hour after sunrise.

On the second night, you'll experience rustic lodging nestled amidst the eroded hills of Gaub, offering a breathtaking view.

classic: Within Namib-Naukluft Park, there are just two lodges, and we've chosen the superior one for your stay. You'll enjoy the privilege of driving to Sossusvlei well before sunrise and staying until the late afternoon sunset, allowing you to explore in the best light without the crowds of tourists.

On the second night, you'll be accommodated near the striking Rotstock Mountains at an architecturally intriguing lodge known for its "pool overlooking the Namib," promising a memorable and picturesque experience.

luxury: You'll be staying at an exceptional, individually curated lodge on a private concession that grants you the exclusive opportunity for a guided game drive on a private road to Sossusvlei. There is no lodge closer to Sossusvlei than this one, although it's important to note that you will arrive at Sossusvlei approximately 30 minutes after sunrise!

Recommendation: Glide over the Namib dune world in a hot air balloon

Some experiences are simply a must! In the face of the region's unpredictable weather, Namib Sky's hot air balloons gracefully ascend amid the dunes and Huns mountains, gracing the gravel flats of the Tsauchab. This journey offers a breathtaking perspective of the dunes, mountains, and the enchanting tapestry of vibrant landscapes as they come alive in the morning light

If you would like a balloon ride, it would make sense to extend the trip here by one day!

Days 6 & 7

Four seasons in one day...

- * 2 nights in a safe accommodation in Swakopmund, tested and selected for you.

inclusive:

- * Bed and breakfast

not inclusive :

- * Dinner (there are several restaurants in Swakopmund, we will be happy to advise you and reserve a table for you...) While there are several excellent establishments in the area offering a diverse range of freshly caught fish and delectable seafood, don't overlook the exceptional roast pork available here.

Oldest desert to the majestic Atlantic Ocean...

Before us lies the vast expanse of Namib's gravel plains, occasionally punctuated by distant mountains and shimmering horizons. As we traverse the long, straight roads, sporadic dust plumes emerge, signifying our journey through, not our destination.

We opt for detours, venturing through sculpted granite landscapes, ancient erosion valleys, and dry riverbeds. In this eerily tranquil realm, we often encounter giraffes, zebras, antelopes, and, if fortune favours us, even cheetahs.

Our path leads us to the cave of two geologists, chronicled in the book "The Sheltering Desert." For this excursion, please don sturdy hiking boots.

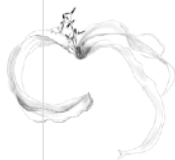
En route, we discover treasures like the world-famous "Welwitschia mirabilis," a 1500-year-old wonder, lichen fields, and the Swakop River's erosion valley, aptly nicknamed the "moonscape." Swakopmund, a charming coastal town, provides opportunities for leisurely strolls, sunbathing (weather permitting), exploration of both modern and colonial landmarks, and indulging in coffee. Private coffee roasteries, a renowned gin distillery, a vibrant art scene, and an unmistakable sense of relaxation tempt us to extend our stay. Notably, the town boasts the best-maintained private museum in the country, an oceanarium, a crystal gallery, and a charming bathing spot we affectionately call the "Mole."

natural: small hotel with a simple yet charming guest-house character, view on the ocean, central location, and a real good breakfast. Standard room.

classic: a good hotel very centrally located to the city centre and Atlantic Ocean - Junior Suite rooms
or

Stay at a welcoming guesthouse located approximately 1km from the city center, nestled near the sea, where you'll be hosted by our Italian friend Silvio and his wife Esbi. Experience the comfort of bright rooms and an open and inviting atmosphere.

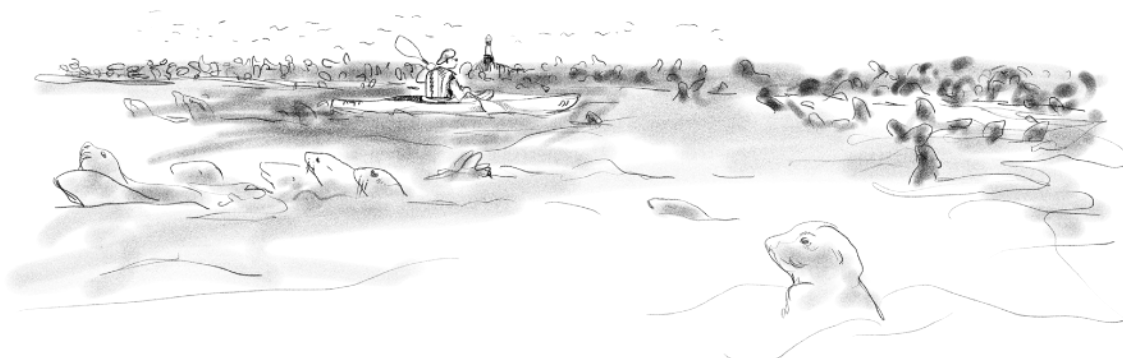
luxury: a good hotel directly on the pier overlooking the Atlantic Ocean - Luxury Suite. This hotel is rated as the best hotel in Swakopmund and has three excellent restaurants, very safe and comfortable.



Activities around Swakopmund:

Explore Walvis Bay, just 30 km south of Swakopmund, with its stunning 11,000 ha lagoon—a natural wonderland. Witness thousands of seabirds, seals, dolphins, and occasional whales and sunfish at this World Heritage Site.

- * For an indulgent experience, embark on a boat cruise, often on spacious catamarans, where you can savour fresh oysters, snacks, and champagne. Watch seals playfully jumping onto the boat while pelicans feed from your hand.
- * To get even closer to nature, consider a kayak tour on the lagoon. Explore Swakopmund's history with a knowledgeable local on a guided town stroll—a highly recommended activity.
- * Take in breathtaking sights on a sightseeing flight over Namibia's dune and desert landscapes, with a 2 to 2.5-hour option.
- * Dive deeper into the desert's wonders with an informative dune drive focusing on the "Little Five"—a collection of desert creatures including reptiles, insects, spiders, and birds.
- * For an exhilarating but rewarding adventure, try a fatbike ride with Swakop Fatbike Tours. Enjoy a comfortable ride through the captivating dune landscape.



Days 8 & 9

Bubbles made of stone...

- * 2 nights in a fairytale landscape surrounded by monstrous granite plutons in a selected lodge

inclusive:

- * Dinner, bed and breakfast

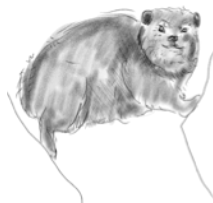
Spitzkoppe & the mighty Erongo

Even from a distance, Namibia's best-known "inselberg", the Spitzkoppe, stands out like a natural monument, protruding from the flat gravel surface of the Namib.

San Bushmen, or so we all like to believe, have painted clearly visible scenarios of hunting and wildlife on the smooth granite walls. The landscape looks like a fairytale and offers wonderful photographic opportunities.

The gigantic granite spheres of the Erongo are impressive, as the visitor feels literally "dwarfed" between the towering rock faces of these bulbous magma mountains. Some legendary rock paintings, semi-endemic bird species and a remarkable semi-desert flora await the hiker or walker here..

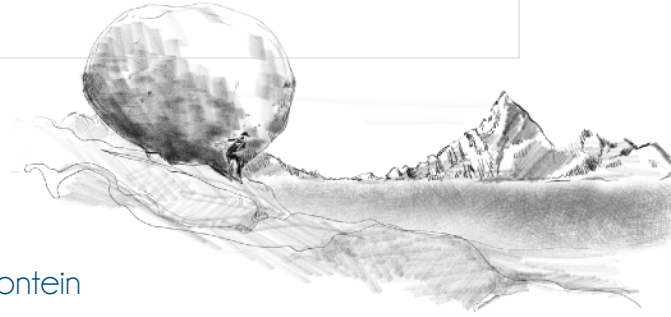
- * Bushman Walk (optional): Here we meet authentic Bushmen who will be happy to open your eyes to their world on a short walk. You will learn how they set traps, use herbal remedies and go hunting with poisoned arrows. You will also see how a fire can easily be lit in this great semi-desert and how pretty jewellery can be made from ostrich eggs and colourful seeds.



natural: The Erongo is most beautiful around "Ameib". Hike the Bulls Party, a fantastic granite ball cluster, and find famous rock paintings at Phillip's Cave. We have chosen the farm-style guesthouse for you nearby. The next day you will be accommodated in a practical and comfortably furnished tented chalet, which offers good access to the bushmen in the area.

classic: On the first evening we have chosen a strategically located beautiful lodge in the middle of the granite mountains for you, as you have wonderful hiking opportunities and good access to the bushmen of the area. On the second evening we prefer a rustic-natural lodge in the middle of the Erongo with wonderful hiking opportunities, game and bird watching.

luxury: High up on the Erongo lies this very small and highly individual lodge with very good food, fantastic views and personal attention. The access roads to the Bushmen are a few kilometres further, but the quality of the lodge is uniquely great.



Days 10 & 11

set in stone..

- * 2 overnight stays amidst exemplary gigantic granite bubbles at a specially chosen lodge

inclusive:

- * Dinner, night and breakfast
- * Guided tour to the petroglyphs at Twyfelfontein
- * Guided (we know our way around) four-wheel drive game drive into the dry river Awa-Huab to look for desert elephants.



Twyfelfontein

The following days will be spent in an area of probably the greatest geological Variety found in Africa, the Damaraland. The main attraction at Twyfelfontein (doubtful spring) is its large gallery of rock art, the most extensive collection of rock-engravings found in Africa. Some engravings are said to be over 6000 years of age. The Petrified Forest reminds us of great central African floods, transporting very large trees over hundreds of miles and depositing them in thick layers of mud... Millions of years, void of any oxygen and under tons of pressure led to a perfect petrification of these historical trees. The scattered trunks of rock are an amazing sight of geological history. We also find the burnt mountain and a small gorge with some basaltic organ pipes in this area.

The dry river Huab finds its way west through this geologically striking desert area. The gigantic Ana trees, also called "winter thorn acacias", produce red pods which are readily eaten by desert-dwelling elephants, let's go and find them....

natural: The lodges in this fascinating landscape are actually all very comfortable. We have chosen a rustic but comfortable tented lodge for you, which is very centrally located and built into a pretty landscape.

Classic e³ luxury: At a fantastically situated, extremely stylish lodge, we have chosen a Standard view room for the *classic* version; the *luxury* version enjoys a Luxury View Room or the Mountain Suite. Every exclusive and tastefully furnished room has its own view of this fantastic landscape. The "Sundowner - Point" is said to offer the most beautiful sundowner in Namibia... here cocktails and small delicacies are also served at sunset.

2 extra days in Damaraland?

please wait for me...

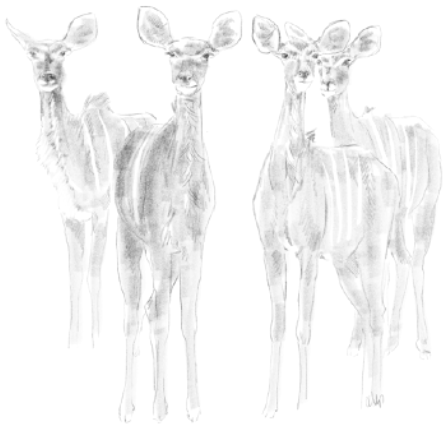
- * 2 nights in high quality safari bungalows with views of the Etendeka Mountains and the palm grove of the Uniab River.

inclusive:

- * Dinner, bed and breakfast

optional activities:

- * „Rhino - tracking" full day excursion
- * Locally guided Sundowner game drive
- * Locally Guided walks



2 additional days Etosha West?

The drier, the more mammals...

- * 2 nights at a nature lodge on the Mudorib Dry River. The lodge is situated in the Mopane savannah surrounded by gigantic winter thorn acacias, whose pods make good elephant food..

inclusive:

- * Dinner, night and breakfast
- * 2x locally guided game drive



Damaraland & Etendeka

Nestled within the strikingly dark red basaltic Etendeka Formation of Damaraland, one discovers the serene oasis of Palmwag Spring amidst lush reeds and majestic Makalani palms. This water source serves as a magnet for a remarkable array of desert-dwelling wildlife, including elephants, giraffes, and various antelope species such as springbok and oryx. Amidst a backdrop of thousands of olive-green Euphorbias, keen observers may be fortunate enough to encounter the endemic Hartmann's mountain zebra.

Embarking on an exploratory journey through the Palmwag concession, we embark on a quest to the diverse avian life, including the elusive Benguela Long-billed Lark and the regal Rüppell's Korhaan.

For an immersive experience, consider joining a locally guided day tour to the critically endangered black rhinoceros, commonly known as the hook-lipped rhino. Along this journey, nature enthusiasts will also have the opportunity to encounter other splendid game species such as giraffes and the majestic Greater Kudu. Occasionally, the road may even reveal the elusive presence of desert elephants and, on rare occasions, the elusive desert lions.



Hobatere Nature Reserve in Damaraland

A truly "untouched" nature, where wildlife can still follow the daily rhythm of Africa. Expect encounters with endemic Hartmann's mountain zebra, numerous antelope and giraffe. Lions, leopards, cheetahs and elephants like to roam this area, being able to observe them is always a matter of luck (and a little experience).

We also like to use this area due to its prolific birdlife, as Bare-cheeked Babbler, Little Sparrowhawk and Scops Owl can already be found in the garden here.

Guided Night drives, with lesser nocturnal species being the centre of attention, deliver much unexpected sightings; Springhare, Genets, Nightjars, Cape and Bat eared Foxes and even the elusive Aardvark are frequently seen here.

You will drive through the Westpark on your day of departure, an absolute highlight which is only possible for a few tourists. Take packed lunches with you and take your time at the waterholes to observe the wildlife, often as the only one(s)

Days 12 & 13

Variety of mammals...

- * 2 nights in the central area of the National Park at a good private lodge outside the park or in a parastatal Waterhole Chalet directly at the renown Okaukuejo Waterhole

inclusive:

- * Dinner, bed and breakfast



natural: All private lodges in the central area are very large and touristy, but since most time is spent in the park, this does not matter for many. We chose a lively, cheap and good lodge with all comforts here.

classic: Although Okaukuejo also offers cheaper double rooms, we have chosen and charged for the better chalets here. Please expect higher visitor numbers here and exercise some tolerance with accommodation and service... the location is very suitable for wildlife viewing but unfortunately also very touristy.

luxury: If you want to distance yourself from the crowds and prefer better accommodation, you should definitely rather go for one of our selected smaller high-end lodges outside the park!

Days 14 & 15

more animals & birds...

- * 2 nights at a good lodge situated in the eastern area, directly adjacent to the park.

inclusive:

- * Dinner, bed and breakfast



natural: The private lodges in the eastern area are all good. We chose a great, but somewhat cheaper bush camp here

classic: An excellent quality lodge in the middle of the dry blood fruit forest.

luxury: You will be accommodated in a fantastic villa in the middle of the blood fruit dry-forest, highly individual and undisturbed. The villa is often used as a honeymoon suite.

Etoscha Nationalpark - Central

Etosha National Park stands out as one of Africa's premier wildlife sanctuaries, despite its arid environment. At the heart of the park lies a vast 4,000 km² salt clay pan, with a number of artesian "contact springs" along its southern perimeter. It is at these springs that a remarkable congregation of diverse wildlife occurs, particularly during drier and warmer seasons.

With a stroke of luck and a keen eye, you may even experience the ultimate thrill of observing magnificent pachyderms and formidable predatory cats in their natural habitat. In these instances, patience and early morning departures are often handsomely rewarded.

The mosaic of ecosystems ensures that every journey through the park is a unique and unforgettable experience.

Etoscha Nationalpark - East

Etosha's primary allure lies in its remarkable variety of habitats and the exceptional opportunities it offers for capturing photographs and observing wildlife. Here, you can encounter a diverse array of animals, including springbok, zebra, brindled gnu, giraffe, hartebeest, steenbok, the Damara dik-dik, black-faced impala, and, with a touch of luck, even elephants, lions, leopards, and cheetahs might grace your path. Keep in mind that this is Africa, where tracking game is a blend of skill and chance, and patience is key.

The avian population in Etosha is not just good; it's truly exceptional. Rest assured, we make sure to pause and appreciate the vibrant birdlife that thrives here.



Remark:

Our Land Cruisers, specially converted for game viewing, have wide window seats and the lever roof is opened at the water points. So you can comfortably take photos sitting and standing up.



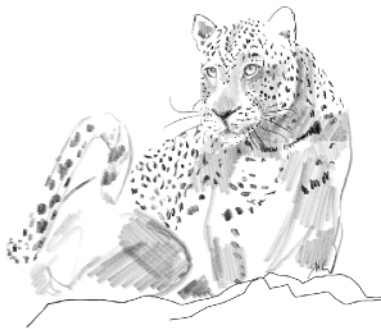
Day 16

great all year round..

- * 1 night at one of the Okonjima Private Lodges, where you'll find comfortable and tastefully decorated accommodations.

inclusive:

- * Dinner, night and breakfast
- * 1x game drive in open game vehicle guided by well-trained rangers.



Africat Foundation - Leopards, Cheetahs & Brown Hyenas

Today's route includes a visit to Otjikoto Lake, a fascinating large sinkhole with uncharted depths, exuding an air of mystery and beauty.

For those seeking unique diversions and willing to start their day early, Tsumeb Museum houses impressive collections of large, naturally valuable crystals and artefacts from the First World War, including cannons. A bit off the beaten path, you'll also discover the awe-inspiring Hoba meteorite, the largest visible meteorite on Earth.

Our ultimate destination today is the "Africat Foundation," a sanctuary dedicated to the conservation and research of brown hyenas and various wild cats, particularly cheetahs and leopards. Here, you're almost guaranteed to witness the majesty of wild leopards in their natural habitat, alongside a variety of other wildlife, such as white rhinos. Animals roam freely within this vast Nature Reserve, hunting their own prey, offering a unique and immersive experience.

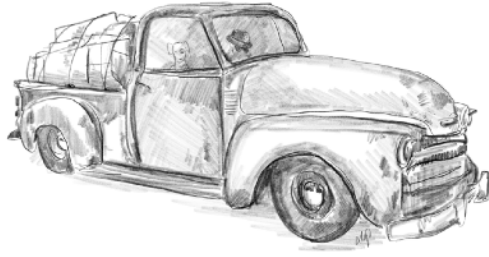
natural: Plains Camp, a high quality Lodge, is geared towards "normal tourism" and is the Africat Foundation's largest Lodge and bigger groups could be accommodated here...

classic: The Bushcamp is one of the best luxurious lodges Namibia has to offer. Comfortable stunningly designed Bungalows are arranged individually and private.

luxury: The African Villa is a African travellers dream! No more words needed...

Day 17

Time for departure...



a sad farewell...

Today, as we journey along the north-south connecting route, our pace is brisk, allowing for ample time in the capital. You can use this time to shop for Namibian handicrafts as souvenirs or indulge in a final delicious game steak paired with Namibian beer.

In the afternoon, we'll provide transportation to either the airport or a recommended accommodation. We're here to assist with booking transfers and any additional logistics you may require, ensuring a seamless experience for your onward journey.

Would you like to fly today or tomorrow?!

Many of our guests opt to combine the final leg of their journey with the airport transfer and check-in during the afternoon. However, recognizing that some prefer to explore the city further or minimize the last-day stress, we arrange an extra night in Windhoek or a stylish accommodation near the airport upon request. Namibia boasts excellent connectivity, with various airlines departing from either Windhoek, the capital, or Walvis Bay, providing flexibility for your travel preferences.

Additionally, some guests choose to enhance their experience with an added component, such as a fly-in to the Caprivi, a visit to the Okavango Delta, or a few days in Cape Town. The choice is entirely yours, and we're here to accommodate your preferences.

Indicative prices for 2024:

Participants	<i>natural</i>	<i>classic</i>	<i>luxury</i>
1 Person	\$ 12.632,00	\$ 15.010,00	\$ 19.918,00
2 Persons	\$ 7.711,00	\$ 9.919,00	\$ 14.516,00
3 Persons	\$ 6.070,00	\$ 8.224,00	\$ 12.716,00
4 Persons	\$ 5.250,00	\$ 7.345,00	\$ 11.816,00
5 Persons	\$ 4.758,00	\$ 6.866,00	\$ 11.276,00
6 Persons	\$ 4.430,00	\$ 6.527,00	\$ 10.916,00
7 Persons	\$ 4.196,00	\$ 6.283,00	\$ 10.659,00
single room supplement	\$ 564,00	\$ 850,00	\$ 2.903,00

Inclusions:

- * Transportation in a travel- and safari-friendly four-wheel-drive Toyota Land Cruiser.
- * Transfers as outlined in the itinerary.
- * Guaranteed window or single seat for each participant.
- * Accommodation and meals as specified in the itinerary.
- * Scheduled activities as per the itinerary.
- * All entrance fees to National Parks and attractions as outlined in the itinerary.
- * An experienced trilingual tour guide proficient in English, German, and Afrikaans.
- * Guided tours conducted in English, with the option for the guide to communicate in German and Afrikaans.
- * Complimentary drinking water provided in the vehicle.

An OFFER, especially for you...

Please provide us with the following information for your personal quotation:

- * Number of participants
- * Double room / Single room
- * Travel date (approximate)
- * Accommodation class: *natural*, *classic*, *luxury* or combined?

Exclusions:

- * Personal expenses
- * Beverages and gratuities
- * International & regional flights

Contact Namibia

Albert Voigts von Schütz
(Owner)

+264 81 124 9572

info@leaflovesafari.com